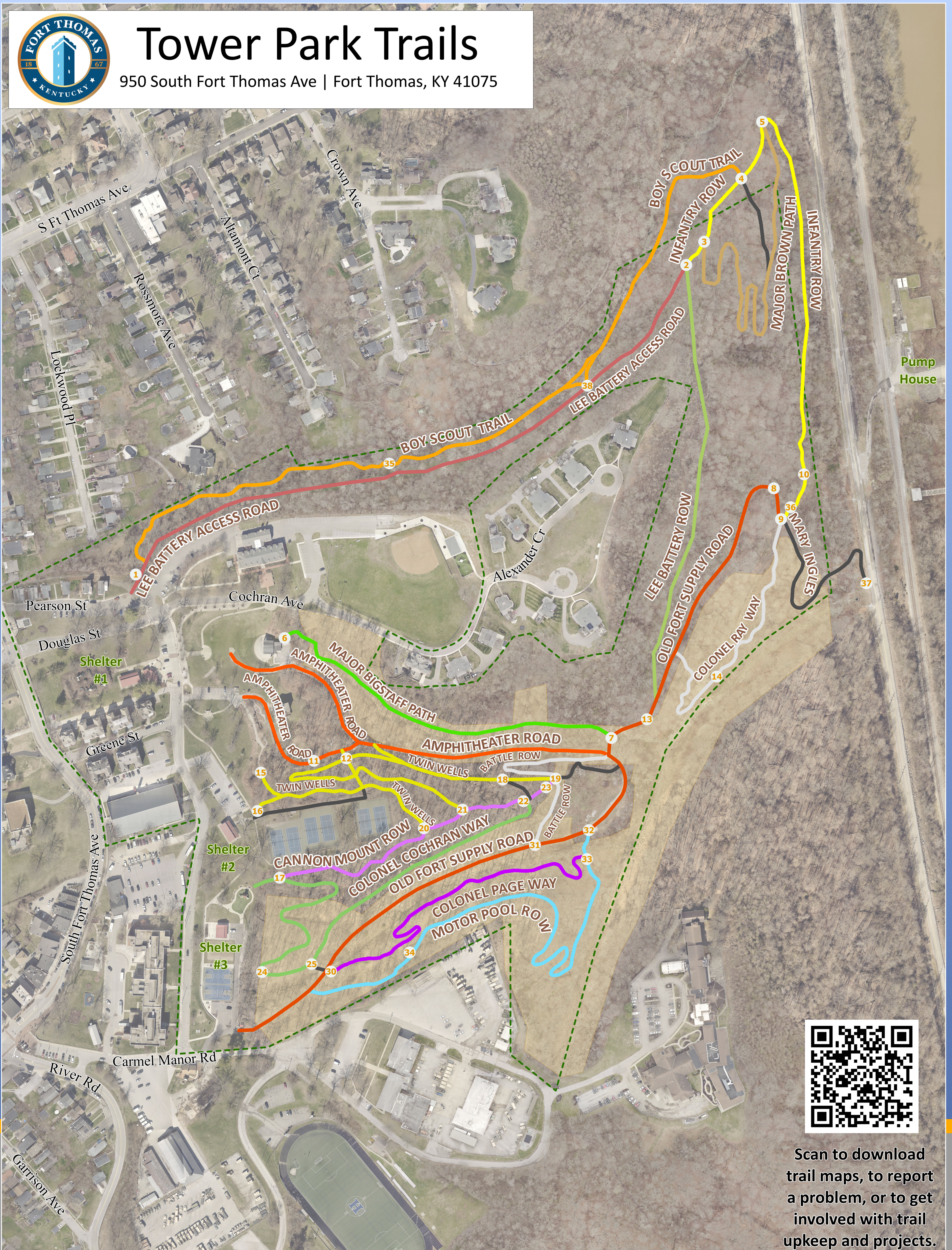




Tower Park Trails

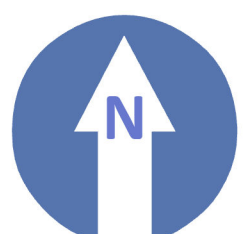
950 South Fort Thomas Ave | Fort Thomas, KY 41075



Scan to download trail maps, to report a problem, or to get involved with trail upkeep and projects.

There are 4.9 miles of trails on 67.0 acres of park

- = Amphitheater Road (0.33 mi)
- = Battle Row (0.13 mi)
- = Boy Scout Trail (0.52 mi)
- = Cannon Mount Row (0.18 mi)
- = Colonel Cochran Way (0.34 mi)
- = Colonel Ray Way (0.18 mi)
- = Colonel Page Way (0.22 mi)
- = Infantry Row (0.36 mi)
- = Lee Battery Row (0.28 mi)
- = Lees Battery Access Rd (0.39 mi)
- = Major Bigstaff Path (0.21 mi)
- = Major Brown Path (0.29 mi)
- = Mary Ingles Trail (0.13 mi)
- = Motor Pool Row (0.34 mi)
- = Old Fort Supply Road (0.50 mi)
- = Twin Wells (0.44 mi)
- = Connector Trail varies (50 ft to 600 ft)
- = Fort Thomas Forest Conservancy Easement
- = Trail Marker



January 2024



Mapping by **LINK GIS**